

# Spotlight on Ainsworth Associates Mechanical Engineers

## Solution Toolkit:

Autodesk® Revit®, IdeateApps

## Technology-fueled Competitiveness, Client Satisfaction, and Employee Engagement

Founded 65 years ago in Sacramento, California, Ainsworth Associates Mechanical Engineers spent its first few years focused on projects in and around the Sacramento area. Then, with the Diagnostic, Treatment, and Surgical addition to the Washoe Medical Center in Reno (known today as Renown Regional Medical Center) in 1956, the firm expanded into Nevada. To this day, it continues to provide mechanical engineering services to architects and owners on projects throughout the two states. Those services include HVAC design, plumbing design, and green building design services.

### Professional Staff Earns Solid Reputation

The staff at Ainsworth Associates Mechanical Engineers includes licensed professional engineers, design engineers, LEED accredited professionals, draftpersons, and technical support staff. "Each and every person is committed to exceeding their customers' expectations," said Roger Gravelle, Mechanical Designer, Ainsworth Associates Mechanical Engineers. "That dedication has earned our firm a reputation of technical proficiency in the production of high-quality mechanical system design, as evidenced by the impressive client list and the amount of repeat work we do for those clients."

// [Ideate Software] tools are fast, effective and easy to use."

### The Latest Technology

To ensure they meet the unique demands of each customer, Ainsworth Associates Mechanical Engineers employs the latest technology in computer aided design (CAD), building information modeling (BIM), energy modeling, drafting, and project management. Leveraging that technology and their extensive knowledge and experience, the professionals quickly analyze and model existing or new building or mechanical systems, and they accurately establish the most appropriate, cost-effective solution to the system under study. "In addition to improving customer satisfaction, the best technology enables us to maintain a competitive edge and attract professionals interested in working on innovative, interesting, and rewarding projects that use their existing skills and continuously teach new ones," said Mr. Gravelle.



Pennington Student Achievement Center at the University of Nevada, Reno. 70,000 square foot building designed by Ainsworth Associates Mechanical Engineers, H+K Architects, and CORE Construction.

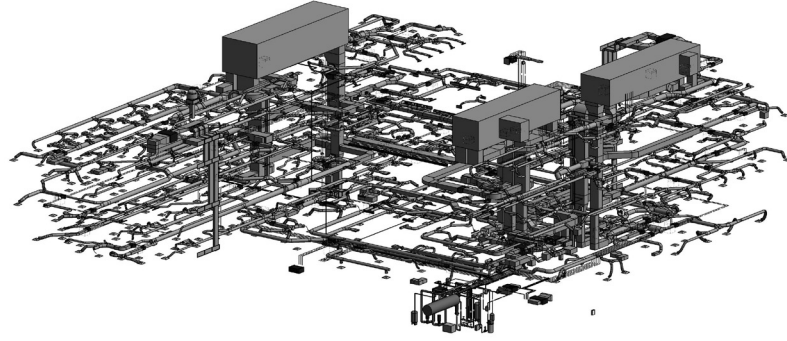
In addition to expanding its geographic footprint, Ainsworth Associates Mechanical Engineers expanded the industries it supports. Now, in addition to hospitals and healthcare facilities, its projects encompass new construction and renovation work for educational facilities, computer data centers, high-rise hotel/casinos, telecommunications centers, and vacation resorts.

// "I have been a long-time fan of Ideate Explorer for its fast and easy selection and management of items in our complex mechanical models."

## Ideate Software and Ainsworth Associates Mechanical Engineers

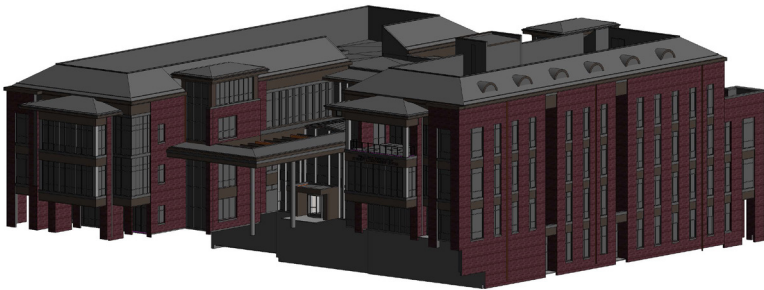
Helping to keep Ainsworth Associates Mechanical Engineers at the forefront of technology are Ideate Software products, “I have been a long-time fan of Ideate Explorer for its fast and easy selection and management of items in our complex mechanical models,” said Mr. Gravelle. “And with last year’s launch of Ideate QuickSelect and Ideate SmartDelete, I have added two more Ideate Software products to the tools I use regularly.”

Ideate QuickSelect and Ideate SmartDelete are part of the IdeateApps collection, designed to streamline the tasks that everyday Revit users perform most often. Ideate QuickSelect enables users to easily select and zoom to elements within the Revit project, template, or family file, Ideate SmartDelete alerts the user to elements that will be deleted along with a selected element.



Mechanical and plumbing systems of Pennington Student Achievement Center created using Revit software and Ideate Software

“As the industry evolves, so do the needs of our customers. I know that Ideate Software is committed to developing tools that will help me meet those needs.”



Initial design of Pennington Student Achievement Center created in Autodesk Revit

“The folks at Ideate Software have clearly worked hard to identify common needs or desires of Revit users beyond the out-of-the box features and have developed the tools in response. The tools are fast, effective and easy to use,” said Mr. Gravelle.

### Participating in Solution Development

“As the industry evolves, so do the needs of our customers,” said Mr. Gravelle. “I know that Ideate Software is committed to developing tools that will help me meet those needs. I stay in touch with them, provide feedback from my team and me on their products, and share thoughts on potential future developments. That way, we not only get the latest solutions, we help shape them.”

Learn more about [Ainsworth Associates Mechanical Engineers](#). Stay up-to-date on [Ideate Software](#) solutions.

## About Ideate, Inc.

Ideate, Inc. (Ideate) is the parent company of Ideate Software. It is a leading Autodesk Authorized Developer with 25+ years' experience in software development. Ideate provides quality software, training, support, and custom consulting services to companies in the architecture, engineering, and construction industries. Headquartered in San Francisco, California and operating Autodesk Authorized Training Centers (ATCs) in California, Oregon, and Washington, Ideate is recognized as an Autodesk Platinum Partner—Autodesk's highest level of authorization—for architecture, engineering, and construction.

## About Ideate Software

Ideate Software allows Revit users to have unprecedented control over their data and solve persistent problems in Architecture, Engineering, and Construction (AEC) workflows. Ideate Software solutions enable Revit users to save time, increase accuracy, improve project deliverables, and elevate design.

Autodesk, Autodesk Revit, and ATC are registered trademarks of Autodesk, Inc. and/or its subsidiaries and/or affiliates in the USA and/or other countries.